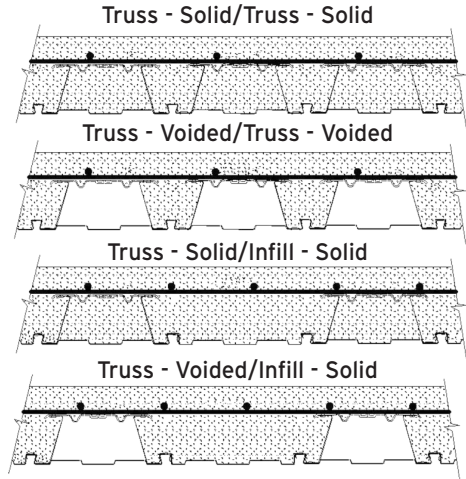


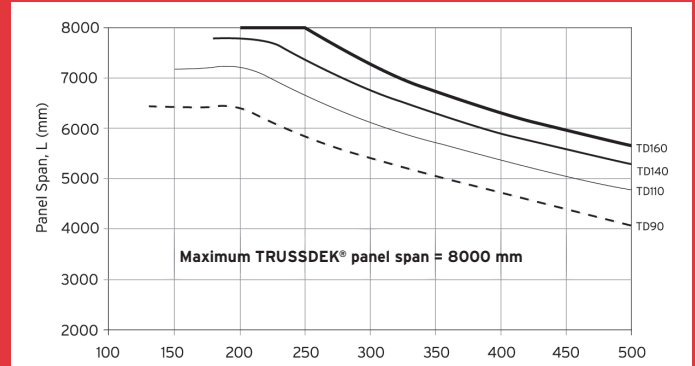
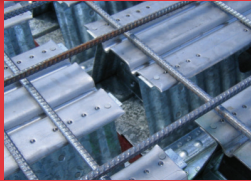
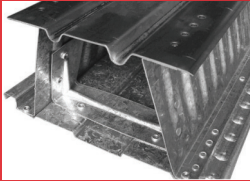
# TRUSSDEK® Long Span Structural Decking

Average concrete depth saving in voided slabs (mm) (TRUSSDEK® panels are precambered in the factory to prevent concrete ponding)		
TRUSSDEK® Panel Code	TRUSSDEK® Composite Slab Type (see figures opposite)	
	Truss-Voided/Truss-Voided	Truss-Voided/Infill-Solid
TD90	55	25
TD110	65	30
TD140	75	35
TD160	85	40
e.g. Average depth of a 200 mm deep TRUSSDEK® composite slab type Truss-Voided/Truss-Voided with TD140 panels equals $200 - 75 = 125$ mm		

Overall depth of TRUSSDEK® panels is 90, 110, 140 or 160 mm. (Where required, pre-punched holes in webs - 50 x 90 mm at variable spacings)



# TRUSSDEK® Long Span Structural Decking



**Overall Composite Slab Depth  $D_{cs}$  (mm)**  
Span Chart for Truss - Voided/Truss - Voided Slabs in  
Unpropped Construction using Simply-Supported Panels

