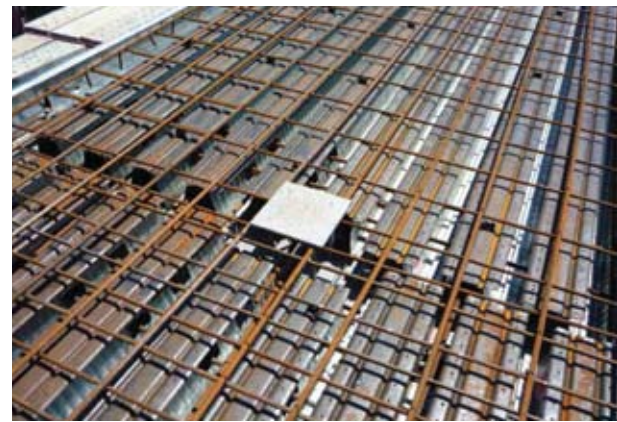


Project: Network House

Products: TRUSSDEK®

TRUSSDEK® solves unique construction challenge



When Brisbane based civil and structural engineering company BG Group were contracted to design the re-development of an office building, TRUSSDEK® permanent composite formwork from OneSteel Reinforcing provided the optimum solution.

Director at BG Group and Senior Structural Engineer, David Bell said, "Network House at Mount Gravatt in Brisbane was a four storey office building. We were contracted to engineer the addition of three new floors, which presented a number of challenges."

One of the biggest challenges encountered by BG Group and builder Walton Construction was the existing roof deck couldn't support additional loads from temporary propping. This led to BG Group having to concentrate the additional load for all three new storeys on the existing column grid alignment and down to the existing footings.

"We chose TRUSSDEK® because of its large spanning capability of 8.5 metres unpropped. This enabled us to span between the universal beam and the universal beam to column," explained David.

Left: Network House was previously a four storey office building to which three new floors were added.

Above: The use of TRUSSDEK® enabled the floors to span between the universal beam and the universal beam to column. TRUSSDEK® has a large spanning capability of 8.5 metres unpropped.





David Bell, Senior Structural Engineer and Director BG Group.

“We had used TRUSSDEK® on previous projects so were familiar with its time, labour and cost saving benefits.”

David Bell, Senior Structural Engineer and Director BG Group.

“BG Group has developed an excellent working relationship with OneSteel Reinforcing. And we would be very comfortable in specifying the TRUSSDEK® system for future projects.”

David Bell, Senior Structural Engineer and Director BG Group.

“We had used TRUSSDEK® on previous projects so were familiar with its time, labour and cost saving benefits,” he said.

As TRUSSDEK® is lightweight, easy to handle and install, it instantly creates a safe and stable working platform. This negates the need for a heavy haulage crane to lift it on to site, making it easy to manoeuvre and reducing site congestion.

Conventional formwork systems require a large amount of back propping and plywood, which increases labour requirements. This is eliminated with the use of TRUSSDEK® as the pan of the TRUSSDEK® acts as the bottom steel, adding to building efficiency

“This was the first time the installers used TRUSSDEK® and although they were a little apprehensive at first, once they were shown how the system connects they found it very easy to install. OneSteel Reinforcing engineer Con Komselis was on site during the initial stage of installation providing advice to the installers,” David said.

“As TRUSSDEK® is a one way spanning system, it’s easy to trace the load path of the floor so you can calculate accurate loads easily, eliminating any uncertainty,” he added.

Mathew Dorge, Contract Administrator at Walton Construction said, “This is the first project undertaken by Walton Construction to utilise the TRUSSDEK® system.

“Some of the form workers who were unfamiliar with TRUSSDEK® were reluctant to do the project.

“One of our site foreman and a labourer started installing the TRUSSDEK® and found it quite easy. So rather than looking for a subcontractor who was familiar with the TRUSSDEK® system, we completed the installation ourselves.

“When we poured the first big slab of level four, Con from OneSteel Reinforcing was onsite advising the concreters who were surprised at how well the TRUSSDEK® system worked,” said Mathew.

Also adding to the efficiency of the project was OneSteel Reinforcing’s ability to supply other key components such as universal columns and beams for the bearers to support the TRUSSDEK®, universal beam rafters for the roof framing and SHS columns.

“BG Group has developed an excellent working relationship with OneSteel Reinforcing,” said David, “And we would be very comfortable in specifying the TRUSSDEK® system for future projects.”

Contacts

New South Wales

Tel: 02 9794 1000
Fax: 02 9772 1689

Western Australia

Tel: 08 6332 3111
Fax: 08 6332 3179

Victoria

Tel: 03 9207 2200
Fax: 03 9207 2270

Northern Territory

Tel: 08 8947 0330
Fax: 08 8947 0358

Queensland

Tel: 07 3845 5655
Fax: 07 3845 5697

Tasmania

Tel: 03 6273 0300
Fax: 03 6273 0315

South Australia

Tel: 08 8349 8666
Fax: 08 8349 7555

ACT

Tel: 02 6260 1244
Fax: 02 6260 1286

To view full length video visit www.reinforcing.tv
For further details, case studies and customer interviews, register for updates at www.reinforcing.com or email: 500PLUS@reinforcing.com

'Branches in every state and territory for customer and technical support!'

OneSteel Reinforcing Pty Limited ABN 22 004 148 289 Locked Bag 3050, Artarmon NSW 1570. OSR1030

