

REINFORCING UPDATE

onesteel
reinforcing

September 2011

NEW 2011/2012 National Product and Services Catalogue

OneSteel Reinforcing, has released the new 2011/2012 edition of its National Products & Services Catalogue.

First released in 2009, the Catalogue has over 100 pages of information on reinforcing products and accessories and is regarded as the most comprehensive reinforcing product reference guide in Australia today.

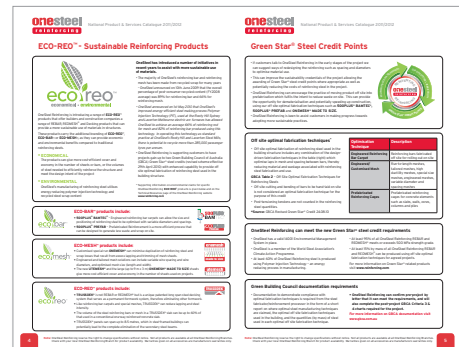
New additions to the Catalogue include updated technical information and product benefits on the range of 500PLUS® REBAR, REOMESH® and an expanded range of Concrete and Building Accessories. All listings include product codes and job reference numbers for easy ordering from OneSteel Reinforcing's national branch network.

Customers can find information on relevant Australian Standards, a comprehensive thesaurus of reinforced concrete terminology, and frequently asked questions sections on many products. Handy information on product usage and application, identification on site, and bending, rebending and straightening of rebar is also included.

To educate the building industry on the use of more sustainable building materials the National Product Catalogue includes information on OneSteel Reinforcing's recently released range of ECO-REO™ sustainable reinforcing products, plus information on how customers can obtain Green Star® Steel Credit Points.

Offered in A4 size for the office, and a smaller A5 version for the car or ute, the 2011/2012 Catalogue is part of the REO ESSENTIALS range of material available from OneSteel Reinforcing to assist customers in their housing, commercial and civil projects.

All of OneSteel Reinforcing's REO ESSENTIALS tools, including the National Product Catalogue, are available FREE from the OneSteel Reinforcing website www.reinforcing.com



continued over page...

Build with OneSteel Reinforcing



www.reinforcing.com

www.reinforcing.tv

REINFORCING UPDATE

onesteel
reinforcing

September 2011

Project: New Image Concrete
Location: Eaglevale, NSW
Product: UTEMESH®



WATCH THE VIDEO

UTEMESH®

The easy to handle, cost-efficient mesh for smaller projects

Becoming more and more popular with homeowners and being seen as a visual feature to complement the house design and landscaped garden, is concrete stamped and patterned driveways.

As visually stunning as some of the designs can be, the driveway is only as strong as the reinforcing steel within.

On a recent project in Eagle Vale, in Sydney's outer west, OneSteel Reinforcing's re-designed UTEMESH® was used to create a new sloping concrete driveway, which also featured a slate effect.

"Definitely one of the main advantages of using UTEMESH® on a project like this is it saves on labour needs," said Scott Campbell, Owner and Director of New Image Concrete, a business specialising in Residential, Commercial and Industrial concreting solutions.

"The light weight 4 m x 2 m sheet size means I'm able to unload, carry and lay the reinforcing steel and set-up the site myself," said Scott. "It essentially makes it a one man project. The only additional labour needed is to help pour and screed the concrete."

One of the many problems concreters have faced is transporting large sheets of reinforcing mesh to the jobsite. UTEMESH® is under the legal RTA requirement for transporting reinforcing steel sheets. This also makes it a lot safer driving to the site.

The re-design of UTEMESH® has seen the flying ends reduced from 100 mm to 20 mm.

"This makes the sheets more user-friendly by minimising the risk of injury when unloading, carrying, placing and tying," Scott explained. "Plus it reduces trip hazards when the sheets are lying on the ground, adding to site safety."

Increased lap efficiency across and along the sheet is achieved by the addition of a double wire along the outer side of each sheet, another feature of the new UTEMESH® design.

"The double wire along the edge of the steel is a lot stronger to tie together and reduces wastage because you don't over exceed lapping, so you get more steel for your money. Depending on the size of the job you could save a sheet or more," Scott said.

continued over page...

Build with OneSteel Reinforcing



www.reinforcing.com

www.reinforcing.tv

REINFORCING UPDATE

onesteel
reinforcing

September 2011

"On occasion," said Scott, "we do jobs at the back of houses with limited or no side access so we have to go through the garage. Unlike UTEMESH®, with larger mesh sheets we'd have to cut it up to get through. As soon as you do that you're overlapping to re-join it and wasting steel," he added.

Scott has been dealing with OneSteel Reinforcing for over five years and is very pleased with the service and support he receives.

"Being able to get everything required for a job from the one supplier saves a lot of time and makes my job easier.

"On this project we're using bar chairs, crack control joints, box grates and stormwater fittings. The concrete colour and stamp mats also came from OneSteel Reinforcing.

"The products from OneSteel Reinforcing are first-class. The sales team have excellent product knowledge and offer great after sales service and advice. It's a strong business relationship that I expect to continue," said Scott.

Supporting information on environmental claims for specific OneSteel Reinforcing ECO-REO™ products including ECO-MESH™ is available on the 'Technical Resources' page of www.reinforcing.com



The compact 4 m x 2 m sheets can be used economically in projects for driveways and paths offering savings in material.



The double wire along the edge of the steel is a lot stronger to tie together and reduces wastage because you don't over exceed lapping, so you get more steel for your money.



Scott Campbell, Owner and Director of New Image Concrete.

Build with OneSteel Reinforcing



www.reinforcing.com

www.reinforcing.tv