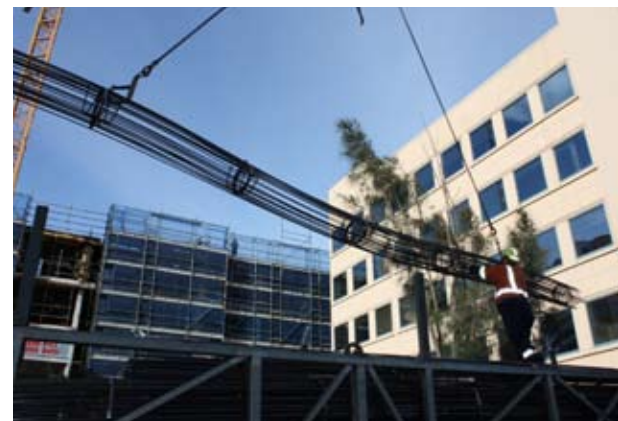


**Project:** Residential Towers, Sydney

**Products:** 500PLUS®BAMTEC®

# Unrolling an efficient slab solution for residential apartments



**OneSteel Reinforcing developed a complete package solution for the efficient construction of Residential Towers at Hurstville in Sydney's South.**

When completed, the complex will feature seven commercial suites and 62 split-level residential apartments with sweeping district views, which includes some units overlooking Botany Bay.

Making a substantial contribution to the efficiency and cost saving of construction is the use of prefabricated 500PLUS® BAMTEC® carpets from OneSteel Reinforcing.

Donny Kayrouz, Director of Kayrouz Construction already knows the advantages of using OneSteel Reinforcing's BAMTEC® carpets saying, "We used BAMTEC® carpets throughout the slabs on a project in Bankstown where we built 250 apartments. They're a great idea and quality product.

"The main benefits of the BAMTEC® system is the simplicity and speed with which the carpets can be laid," Donny said.

**Left:** 500PLUS®BAMTEC® complete units ready to unroll on the Residential Towers site.

**Above:** 500PLUS®BAMTEC® is delivered by OneSteel Reinforcing and craned where needed on site. 500PLUS®BAMTEC carpets are unrolled into place.





**“When we laid and tied the rebar manually on the first level, it took ten men one week to complete with BAMTEC®, we can do a floor in a day.”**

Donny Kayrouz, Director of Kayrouz Construction

**“We used BAMTEC® carpets throughout the slabs on a previous project in Bankstown where we built 250 apartments. They’re a great idea and quality product.”**

Donny Kayrouz, Director of Kayrouz Construction

“When we laid and tied the REBAR manually on the first level, it took ten men one week to complete. With BAMTEC®, we can do a floor in a day.”

For each level, four layers of BAMTEC® carpets are laid, with electrical cabling installed between layers two and three. It takes only four hours to lay the bottom carpets, four hours to lay the top carpets and two hours for chairing.

“With every project you’re trying to achieve more in less time and keep overheads to a minimum and one of the biggest costs to builders is labour,” he said.

The BAMTEC® carpets are prefabricated from N12 pre-welded rebar spaced at 200 mm centres and delivered to site as complete units. Once craned into place, the BAMTEC® carpets can be simply unrolled by two to four men.

A distinct advantage of BAMTEC® carpets is their flexibility of fabrication to adjust to the required reinforcement intensity as specified by the design engineer. By using BAMTEC® carpets, any bar spacing and rebar size can be incorporated into the design.

“The BAMTEC® carpets are prefabricated so precisely using the Nemetschek detailing system and CAD computer software that they are configured to unroll around staircase voids and other structural installations, so we don’t need to cut the rebar to the shape of the deck.

“The SUPPLY & FIX® solution package developed by OneSteel Reinforcing in conjunction with the use of BAMTEC® carpets saves us quite a considerable amount of time and labour on the project,” says Donny.

“The support we receive from OneSteel Reinforcing is excellent. OneSteel Reinforcing engineer David Tarabay provides valuable advice and oversees laying of the BAMTEC® carpets.

“BAMTEC® is an integral element in the construction of Residential Towers,” Donny explained, “If we didn’t use BAMTEC® carpets the steelfixers would have to carry, lay and tie hundreds of loose bars by hand for every floor. This is not only labour intensive but time consuming.

“Apart from being a much faster system for laying rebar, BAMTEC® carpets reduce site congestion making for a safer worksite. The men also work at a more comfortable angle which is better for their backs,” says Donny.

At a time when the building industry is looking for time and labour saving options wherever possible, OneSteel Reinforcing’s prefabricated BAMTEC® carpets provide a perfect solution.

## Contacts

### New South Wales

Tel: 02 9794 1000  
Fax: 02 9772 1689

### Western Australia

Tel: 08 6332 3111  
Fax: 08 6332 3179

### Victoria

Tel: 03 9207 2200  
Fax: 03 9207 2270

### Northern Territory

Tel: 08 8947 0330  
Fax: 08 8947 0358

### Queensland

Tel: 07 3845 5655  
Fax: 07 3845 5697

### Tasmania

Tel: 03 6273 0300  
Fax: 03 6273 0315

### South Australia

Tel: 08 8349 8666  
Fax: 08 8349 7555

### ACT

Tel: 02 6260 1244  
Fax: 02 6260 1286

To view full length video visit [www.reinforcing.tv](http://www.reinforcing.tv)  
For further details, case studies and customer interviews, register for updates at [www.reinforcing.com](http://www.reinforcing.com) or email: [500PLUS@reinforcing.com](mailto:500PLUS@reinforcing.com)

**'Branches in every state and territory for customer and technical support!'**

OneSteel Reinforcing Pty Limited ABN 22 004 148 289 Locked Bag 3050, Artarmon NSW 1570. OSR866

